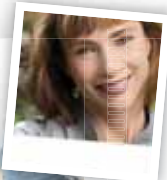




**HORIZON**<sup>®</sup>

Horizon Memory Craft 8900 QCP / 8200 QC

# Come Away With Me



When you're doing something you truly love, you reach a point where you're "in the zone." You know the feeling we're talking about. Everything else falls away, and it's just you, the fabric, and the creativity. It happens when a machine makes your sewing experience so smooth and easy, so worry-free, it quite simply takes you away.



**JANOME**<sup>®</sup>

[www.janome.com.au](http://www.janome.com.au)





IT'S TIME TO DISCOVER YOUR FULL POTENTIAL WITH THE HORIZON MEMORY CRAFT 8900 QUILTER'S COMPANION PROFESSIONAL

# You Have An Entire World Of Quilting & Sewing To Explore

Creativity is about unlocking possibility, giving you features to expand your options, and making those features easy-to-use right out of the box.



11"+ to Right of Needle

You get the tools to make that great big quilt

You've thought about making a large scale quilt. Or maybe you've even started one. The Horizon Memory Craft 8900 QCP gives you everything you need to get it done.

You get 11"+ of room to the right of the needle, enough to fit a large quilt while you do free motion stitching. And if you want to go really big, the MC8900 QCP is designed to work on a quilt frame. It even has an optional remote thread cutter.



AcuFeed Flex™

AcuFeed Flex™ Fabric Feeding System: Go as thick as you want

The quiet power of this machine really shows itself when it comes time to sew multiple layers. Engage the exclusive AcuFeed Flex™ fabric feeding system and feel your project moving together under the needle with perfect precision.

You get the same great results on quilts, thick home décor projects, even garments and accessories, such as matching plaid at a seam line or working with difficult fabrics, like micro-fiber.

The AcuFeed Flex™ fabric feeding system is fully detachable and easy to remove when you're not using it. The twin foot is standard; a single foot is available as an option.



1000 Stitches Per Minute

Cruise through those long seams on the 8900 QCP at a thousand stitches per minute

You won't always want to sew that fast. But when you're doing a long straight stitch, it's nice to be able to finish it quickly—and know every stitch will be beautiful.

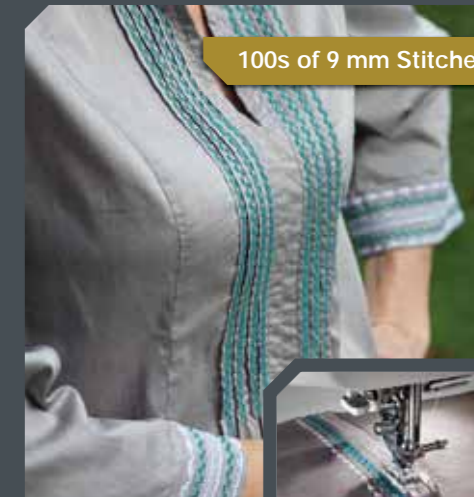


91 Needle Positions

Super fine needle position adjustment: 91 needle positions!

You can move the needle to 91 unique positions in order to get pinpoint accuracy for decorative stitching, appliqué or fine quilt finishing. There is also a One-Touch quarter inch stitch setting that will make piecing faster and easier than ever. And, you can now direct select the left needle position for free motion quilting, giving you better control and precision.

Add the Cloth Guide for long seams, and all your stitching will be beautifully precise every time.



100s of 9 mm Stitches

Do bigger and bolder embellishment with hundreds of 9mm stitches

The MC8900 QCP comes with 270 stitches, with 6 Direct Select buttons to high-use stitches. Choose from Utility, Appliqué, Heirloom, Quilting, Pictograph, and more; the majority are 9mm wide! Quilters will love the new Serpentine stitch, which can adjust to 9mm in width, 5mm in length.

In addition to horizontal mirroring (TOM), you can now vertically flip 29 stitches. The 11 buttonholes can be customised for stitch width, stitch density and buttonhole opening. Three alphabets go up to 9mm, and letter size and shape have a more realistic appearance and balance. Entire words can be programmed rather than stopping to save each letter.



## One-Step Needle Plate Conversion

You don't need a screwdriver to change the needle plate from Standard to Straight Stitch. Now the plate just pops out with the push of a lever for a quick switch.





ENJOY ALL THAT ROOM WITH SPEED, POWER AND TIME-SAVING FEATURES.

# Discover The Machine That Can Take You There



- 1 **ACUFEEED FLEX™ FABRIC FEEDING SYSTEM**  
Dual upper feed detaches when not in use.
- 2 **11"+ WORKSPACE ON A STABLE ALUMINIUM FRAME**  
Lots of room to the right of the needle.
- 3 **ONE-STEP NEEDLE PLATE CONVERSION**  
Go from zig zag to straight stitch faster.
- 4 **270 BUILT-IN STITCHES**  
Including 11 buttonholes and 3 alphabets.
- 5 **9MM STITCH WIDTH**  
More than 25% larger than a regular 7mm stitch. Bigger, bolder decorative stitches.
- 6 **JOG DIAL**  
For smooth and quick navigation.
- 7 **LCD TOUCH SCREEN**  
Backlit for easy reading.
- 8 **ADJUSTABLE KNEE LIFTER**  
Raise the needle without using your hands. Ergonomically designed and positions.
- 9 **REMOTE THREAD CUTTER PORT**  
Cut the thread by pressing the remote switch for easy control. Great for use on a quilt frame.
- 10 **SPEEDS UP TO 1,000 STITCHES PER MINUTE**  
Zip along those long seams.
- 11 **QUICK REFERENCE STITCH CHART**  
Flip up the lid to view.
- 12 **NEEDLE UP/DOWN SELECTION**  
Down as default setting.
- 13 **PATENTED NEEDLE PLACEMENT**  
Needle drop position, angle marks and front-of-the-foot guides.
- 14 **SFS+ WITH 7-PIECE FEED DOG**  
Feeds a variety of fabric without slipping or shifting.
- 15 **6 DIRECT SELECTION KEYS**  
Takes you directly to your most-used stitches.
- 16 **5 BRIGHT LED LIGHTS**  
Illuminate more of your work area.
- 17 **LARGE FOOT CONTROL**  
More stable, fits all shoe types
- 18 **FAVOURITE STITCH FUNCTION**  
The pre-set stitch values can be adjusted to your favorite settings.







**CREATIVITY AND CONTROL RIGHT OUT OF THE BOX WITH THE 8200 QUILTER'S COMPANION**

# Extra Sewing Room With Essential Features

The Horizon Memory Craft 8200 QC offers an amazing sewing and quilting value.



**1 SPEEDS UP TO 860 STITCHES PER MINUTE**  
Enjoy power and precision.

**2 9MM STITCH WIDTH**  
For wider decorative stitches.



**3 11"+ WORKSPACE**  
Plenty of quilting room to the right of the needle.

**4 120 BUILT-IN STITCHES**  
Including 7 buttonholes and an alphabet.

**5 ADJUSTABLE, ERGONOMIC KNEE LIFTER**  
Raise the needle without using your hands.

**6 ONE-STEP NEEDLE PLATE CONVERSION**  
Go from zig zag to straight stitch in one touch.



**7 QUICK REFERENCE STITCH CHART**  
Flip up the lid to view.

**8 SFS+ WITH 7-PIECE FEED DOG**  
Smooth, precise feeding of a variety of fabrics without slipping or shifting.



**9 LCD SCREEN / TOUCH PANEL**  
Backlit for easy reading.

**10 AUTOMATIC THREAD CUTTER**  
Set it to automatically cut at the end of a seam.

**11 10 DIRECT SELECT KEYS**  
Take you directly to your most-used stitches.

**12 ACUFEEF FLEX™ FABRIC FEEDING SYSTEM\***  
Dual upper feed detaches when not in use.  
\*TWIN FOOT STANDARD. SINGLE FOOT OPTIONAL





# HORIZON®

## Horizon Memory Craft 8900 QCP / 8200 QC



**MC8900 QCP**



**MC8200 QC**

|   |   |   |
|---|---|---|
| MACHINE SIZE                              | W519×H316×D230mm  |   |
| MACHINE WEIGHT                            | 12.3 kg   |   |
| WORK SPACE (WIDTH / HEIGHT)               | 280mm / 120mm   |   |
| MAX. SEWING SPEED (W/CONTROLLER)          | 1000spm   | 860spm  |
| TOUCH PANEL W/STYLUS                      | Touch Panel /Jog Dial<br>Direct Selection: 6 Stitches   | Touch Panel with 10-Keys<br>Direct Selection: 10 Stitches |
| SCREEN TYPE AND SIZE                      | Black and White LCD Backlight<br>Size: 67.2×33.6mm  | Black and White LCD Backlight<br>Size: 68x25.5mm          |
| MULTI-LANGUAGE                            | 15 Languages (Eng, French, Spanish, German, Dutch, Italian, Swedish, Finnish, Russian, Portuguese, Polish, Turkish, Traditional Chinese, Simplified Chinese, Korean)  |   |
| THREAD TENSION                            | Automatic   |   |
| BOBBIN WINDER                             | Auto Declutch   |   |
| FEED DOG                                  | 7 Pieces (9mm Zigzag)   |   |
| DROP FEED DOG                             | Yes   |   |
| AUTOMATIC THREAD CUTTER                   | Yes   |   |
| REMOTE THREAD-CUTTER PORT                 | Yes   | No  |
| FOOT PRESSURE ADJUSTMENT                  | Yes   |   |
| BUILT-IN NEEDLE THREADER                  | Yes   |   |
| UPPER FEED DEVICE                         | Yes (Removable Type, Twin Type, Single Type is Optional.)   |   |
| KNEE LIFTER                               | Yes   |   |
| NUMBER OF BUILT-IN STITCHES AND ALPHABETS | 270 Stitches Including 11 Buttonholes   | 120 Stitches Including 7 Buttonholes                      |
| ONE STEP NEEDLE PLATE CONVERSION          | Yes   |   |
| MAXIMUM ZIGZAG WIDTH / LENGTH             | 9mm / 5mm   |   |
| OTHER FUNCTIONS                           | Hook Cover (Pop Up Type), Speed Control Slider, Start/Stop Button, One Touch Slow Function, Needle Up/Down Button, Needle Up/Down Position (Down as Default Setting), Auto-Lock Button, Reverse Button, Start With Reverse Sewing, Bobbin Winding Sensor, Presser Foot Safety Device, Bobbin Winder, Lamp (3 Places, White LED) |   |
| UP/DOWN FLIP DESIGN                       | Yes (29)  | No  |
| FAVOURITE STITCH FUNCTION                 | Yes   | No  |
| COVER                                     | Yes (Semi-Hard Cover)   | Optional (Semi-Hard Cover)                                |
| FOOT CONTROLLER                           | Yes (Large Type)  | Yes (Standard, Black); Optional (Large Type)              |
| LARGE EXTENSION TABLE                     | Yes   | Optional  |
| CLOTH GUIDE                               | Yes   | Optional  |
| THREAD STAND (LARGE, CONE CAPABLE)        | Optional  |   |
| TABLE STAND                               | Optional  |   |

More standard and optional accessories means **more ways to make your sewing and quilting easier and better than ever.**



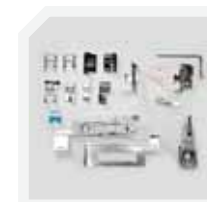
### Large Extension Table

STANDARD WITH MC8900 QCP, OPTIONAL WITH MC8200 QC



### New Larger Foot Controller with Optional Remote Thread Cutter Pedal\*

\*THREAD CUTTER PORT ON THE MC8900 QCP ONLY.



### 16 Presser Feet, Quilting Guide Bar & Buttonhole Plate

STANDARD WITH MC8900 QCP AND MC8200 QC



### Optical Magnifier

GET A CLOSE-UP LOOK AT YOUR WORK UNDER THE NEEDLE. AN OPTIONAL MAGNIFIER IS AVAILABLE IN A +1.2 STRENGTH.



### Cloth Guide

STANDARD WITH MC8900 QCP, OPTIONAL WITH MC8200 QC



### Semi-Hard Cover

STANDARD WITH MC8900 QCP, OPTIONAL FOR THE MC8200 QC

*Specifications subject to change.*

### AUSTRALIA

Janome Australia Pty Ltd.  
PO Box 1383, Moorabbin 3189 Victoria  
www.janome.com.au

### NEW ZEALAND

Janome New Zealand Ltd.  
Unit 5 325 Ti Rakau Dr, East Tamaki, Auckland 2013  
www.janome.co.nz



# JANOME®

www.janome.com.au