



664

So cool!



elna
SWISS DESIGN

664



STITCHES

664

Number of Threads	4/3
Safety 4 Thread	✓
Stretch Knit	✓
Gathering 4	✓
3 Thread Wide	✓
Overlock 3	✓
Narrow Hem 3	✓
Rolled Hem 3	✓
Flatlock 3	✓



STITCH IN TIME

Lots of tricks, with standard or ornamental stitches. To use functionally or decoratively on jersey, silk, gauze, sponge or lycra.

TECHNICAL FEATURES

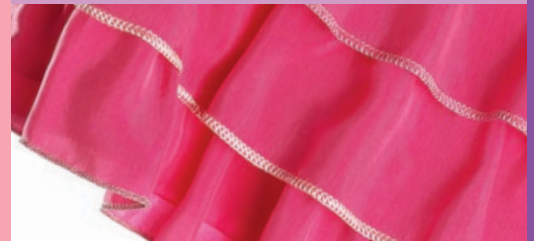
664

Instant rolled hem device	✓
Self-threading lower looper	✓
Maximum speed of 1300 rpm	✓
Adjustable differential feed 0.5 to 2.25 mm	✓
Stitch length setting 1.0 to 5.0 mm	✓
Adjustable cutting width 3.0 to 7.0 mm	✓
Colour-coded threading routes	✓
Cutting blade	✓
Adjustable foot pressure	✓
Snap-on presser foot	✓
Telescopic thread antenna system	✓
Electronic foot control	✓
Accessory box	✓
Dust cover	✓



AT YOUR FINGERTIPS

A friendly machine to use. Stitch length and differential feed; all the settings are easy to see, easy to access.



ALL THE FRILLS

Turn heads by turning fabrics inside out. Show off with perfect hems and finishes.



WARRANTY AND SERVICE: Elna's superior reputation was established in 1940 with the production of its first sewing machine. Ever since, Elna has continued to be the leading brand of home sewing and related equipment designed especially with the innovative sewer in mind. Thousands of professionals worldwide provide expert service. Millions of people have chosen Elna for its quality, performance and reliability.

elna
SWISS DESIGN

www.elna.com